




# COUPERS

LIFESTYLE PROPERTIES



## 13 Coral Close Rosebud VIC

3  2  2 

Set on approximately 853m<sup>2</sup> in a quiet Rosebud close, this split level home offers space that's becoming harder to find.

Inside, the layout provides two separate living areas, giving flexibility for families, guests or simply a bit of separation when needed. The main living and dining zone feels open and comfortable, with large windows looking out to greenery and bringing in steady natural light. A second living space offers options as a sitting room, media room or children's retreat.

The kitchen sits centrally within the home, practical and well connected to both indoor and outdoor living.

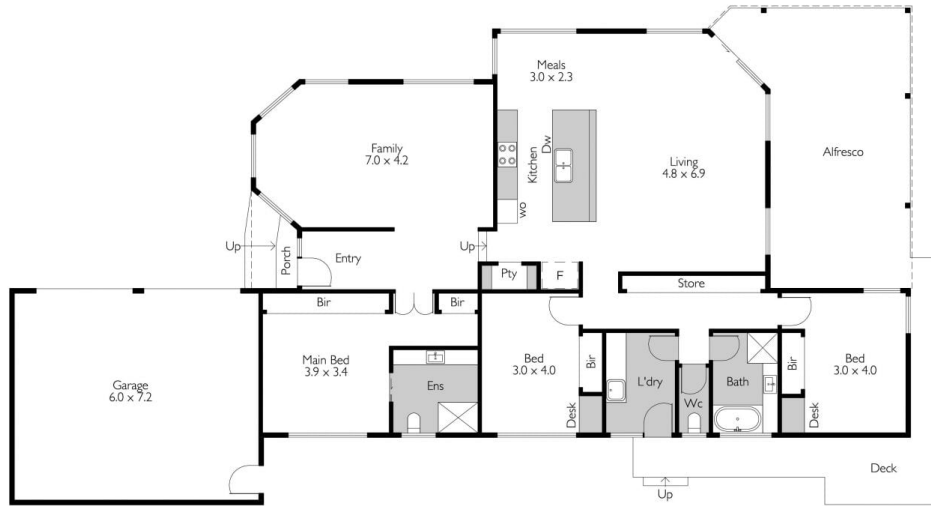
**Type** : House  
**Price** : \$ 950,000  
**Land Size** : 853 sqm  
**View** : <https://couperslp.com.au/8628838>



**Paul Wells**  
0428 745 449

[For full version visit the website](https://couperslp.com.au)

<https://couperslp.com.au>



Internal living area  
approx: 24.4 squares

13 Coral Close, Rosebud

**COUPERS**  
LIFESTYLE PROPERTIES