

# COUPERS

LIFESTYLE PROPERTIES



## 7 Lahinch Drive Fingal VIC

4 3 2

This is the kind of home people move here for. Set within Moonah Links this light-filled home captures exactly why people choose this pocket of the Peninsula open skies, generous space and a pace that noticeably slows the moment you arrive.

From the street, it immediately feels settled and well placed, fitting naturally into its surroundings. Inside, natural light moves easily through the home and the sense of openness becomes part of everyday life, with the changing light subtly marking the day from morning through to evening.

The kitchen sits at the centre, connecting naturally to the main living and dining areas. It's a space designed for everyday living and entertaining, keeping everyone

**Type** : House  
**Price** : \$1,600,000-\$1,750,000  
**Land Size** : 751 sqm  
**View** : <https://couperslp.com.au/8601926>



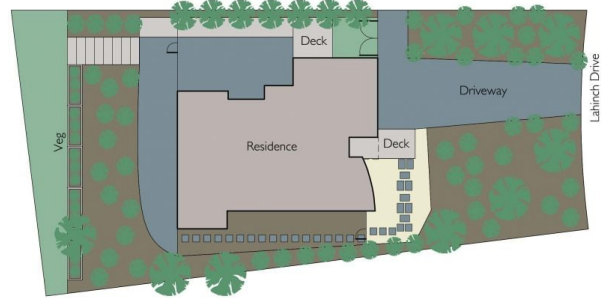
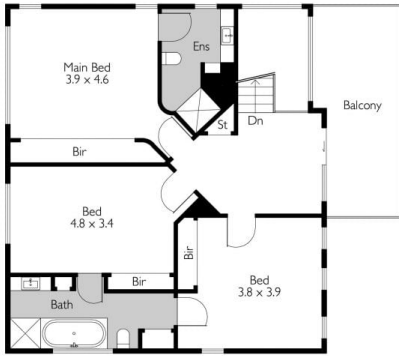
**Paul Wells**  
0428 745 449



**John Couper**  
0411 884 641

[For full version visit the website](https://couperslp.com.au)

<https://couperslp.com.au>



Internal living area  
approx: 27.3 squares

7 Lahinch Drive, Fingal

**COUPERS**  
LIFESTYLE PROPERTIES