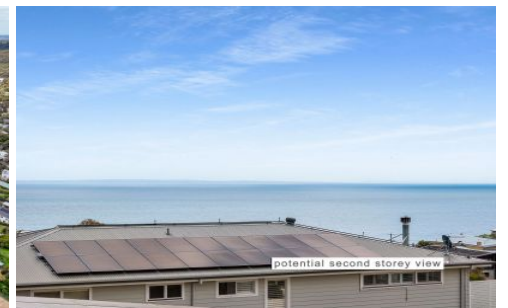
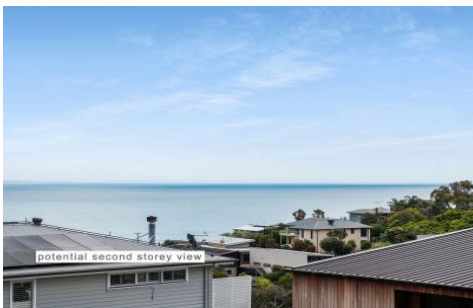


# COUPERS

LIFESTYLE PROPERTIES



## 21 Ian Road Mount Martha VIC

This generous 2,067m<sup>2</sup> (approx.) block sits in a quiet, established part of Mount Martha and offers plenty of room to build the home you've been planning. With a wide 22m street frontage, the property provides excellent street presence and flexibility for a range of future designs.

Surrounded by quality homes and natural bushland, it's a peaceful setting with a lot of long-term appeal. The land offers a broad building envelope with space for a modern home, pool, shedding or a studio (STCA). There are some bay views from the site, and a well-designed two-storey build may make the most of them (STCA).

Families will appreciate being in the Dromana College school zone, one of the most sought-after public school catchments on the Peninsula.

**Type** : Land  
**Price** : \$1,195,000-\$1,295,000  
**Land Size** : 2067 sqm  
**View** : <https://couperslp.com.au/8565356>



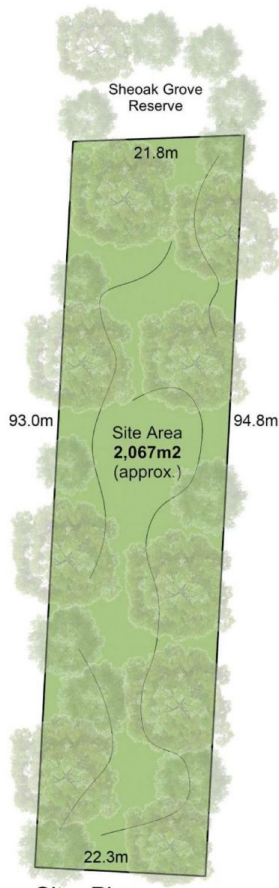
**Paul Wells**  
0428 745 449



**Thomas Solunto**  
0401 872 780

[For full version visit the website](https://couperslp.com.au)

<https://couperslp.com.au>



North Orientation  
for Site Plan

Site Plan