

COUPERS

LIFESTYLE PROPERTIES



14 Nagles View Fingal VIC

4 2 2

Perched high above the rolling fairways of Moonah Links, this architect-designed retreat takes in uninterrupted views with a front-row seat to the opening fairways of the Legends Course a perspective rarely offered and never forgotten.

Wake each morning to peace and quiet, then finish the day watching the light change across one of Australia's most celebrated golf courses.

The home is designed around lifestyle and comfort. Expansive living flows seamlessly to a wide entertaining deck with swim spa, perfectly positioned to soak up the golf-course outlook. Modern finishes, generous bedrooms

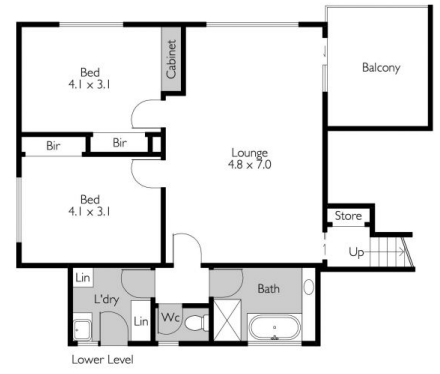
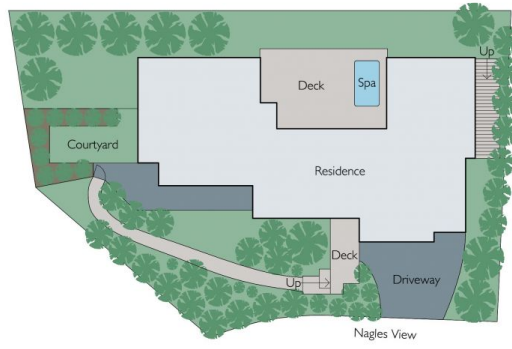
Type : House
Land Size : 733 sqm
View : <https://couperslp.com.au/8499397>



Paul Wells
0428 745 449

[For full version visit the website](https://couperslp.com.au)

<https://couperslp.com.au>



Internal living area
approx: 31.9 squares

14 Nagles View, Fingal

COUPERS
LIFESTYLE PROPERTIES