

# COUPERS

LIFESTYLE PROPERTIES



11&12/50 Peter Thomson Drive Fingal VIC

2 🛏 2 🚿 2 🚗

Positioned side by side within the heart of Moonah Links Estate, these two apartments showcase uninterrupted views across the fairways and the rolling Peninsula landscape. From the living areas and bedrooms alike, the outlook is a constant reminder of why this is one of Victoria's most desirable addresses, with sunsets casting a spectacular glow across the sky each evening.

Each apartment combines modern comfort with the convenience of resort living, making them ideal for personal use, holiday enjoyment or flexible income potential. Step outside and you're moments from championship golf courses, luxury spa facilities, pristine beaches and world-class wineries.

[For full version visit the website](https://couperslp.com.au)

**Type** : Apartment

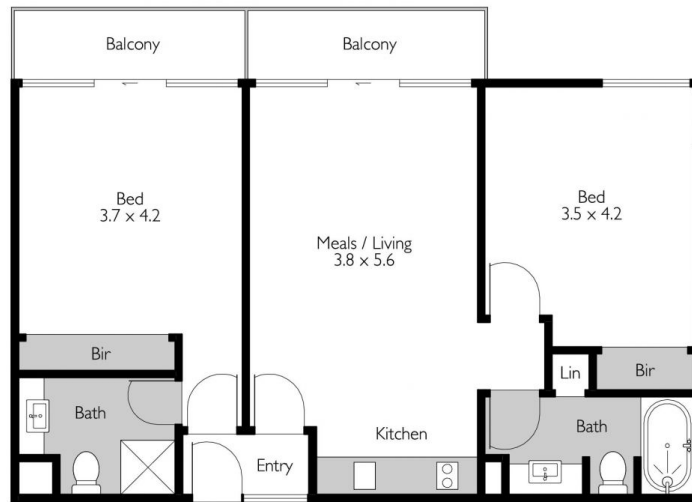
**Price** : \$725,000-\$775,000

**View** : <https://couperslp.com.au/8481529>



**Paul Wells**  
0428 745 449

<https://couperslp.com.au>



Internal living area  
approx: 7.8 squares

11 - 12 Peter Thomson Drive Fingal

**COUPERS**  
LIFESTYLE PROPERTIES