

COUPERS

LIFESTYLE PROPERTIES



35 Exford Drive Mornington VIC

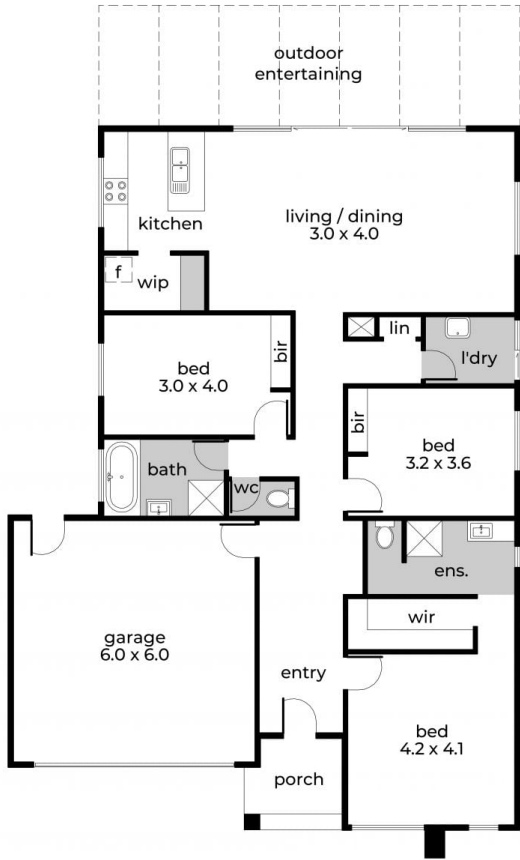
3 2 2

Set in a quiet pocket of Mornington, this near-new 3-bedroom home offers low-maintenance living with plenty of space to spread out. There's a generous shed, plus off-street parking for a boat or caravan ideal for tradies, travellers or families needing flexibility. Enjoy easy access to local shops, parks, and schools, all just minutes from home with Padua College within walking distance. Stylish interiors, a quality build, and a great location this one ticks all the boxes.

Type : House
Land Size : 677 sqm
View : <https://couperslp.com.au/8375621>



Paul Wells
0428 745 449



Internal living area
 approx: 18.39 squares
 Outdoor entertaining area
 approx: 2.91 squares
 Total area
 approx: 21.3squares

35 Exford Drive, Mornington

COUPERS
 LIFESTYLE PROPERTIES