

# COUPERS

LIFESTYLE PROPERTIES



## 30 Lahinch Drive FINGAL VIC

4 3 4

Looking for spectacular views for your next move? The best views on Moonah Links!  
Reduced in price for the astute buyer to be in for Summer holidays.

This spacious golf front, coastal residence features the essential elements sought after by our discerning buyers, including functional design, quality build, spectacular views, tranquil setting, generous-sized living spaces, passive heating and cooling to save on energy bills, wood floors, low maintenance garden.

The entry courtyard and foyer are drenched in sun and lead to the large open-plan living area with double-hung

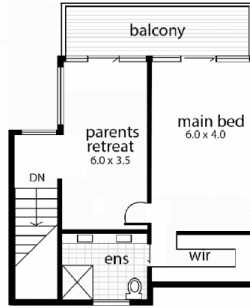
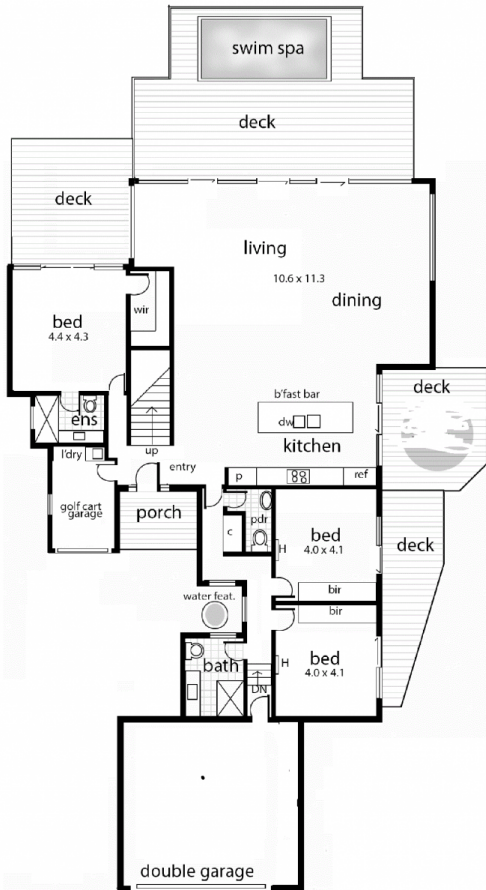
**Type** : House  
**Land Size** : 1113 sqm  
**View** : <https://couperslp.com.au/8337577>



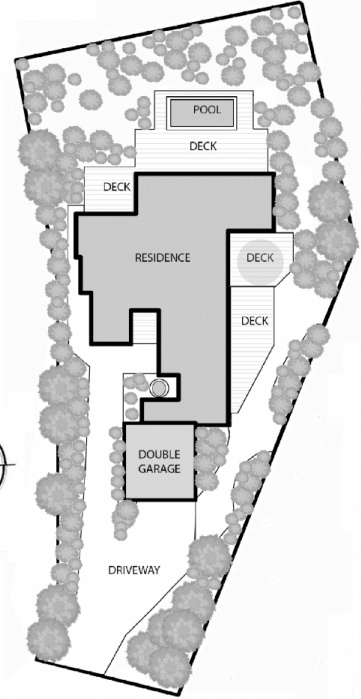
**John Couper**  
0411 884 641

[For full version visit the website](https://couperslp.com.au)

<https://couperslp.com.au>



FIRST FLOOR



30 Lahinch Drive, Moonah Links

**COUPERS**  
LIFESTYLE PROPERTIES