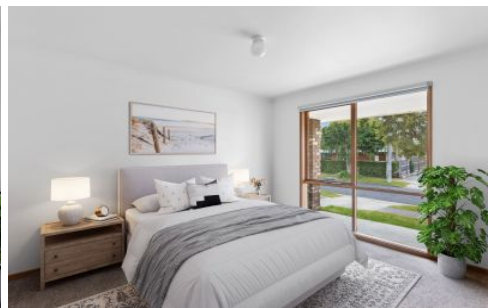


COUPERS

LIFESTYLE PROPERTIES



26 Graf Road Somerville VIC

3 2 1

This cozy brick house features a spacious master suite with an ensuite, along with two additional bedrooms and a well-designed layout that makes everyday living a breeze. Sitting on a low-maintenance 661m² block (approx), you'll enjoy the simplicity of outdoor upkeep while having plenty of space for children or pets to play.

The location couldn't be better—just a short walk away from primary and secondary schools, nearby parks, and the shops at Somerville Central and Plaza. Whether you're a young couple starting out, a growing family looking for a place to put down roots, or empty nesters seeking a convenient lifestyle, this property has something for everyone. It's a fantastic entry point into the market, a great investment opportunity, or the ideal address to support your

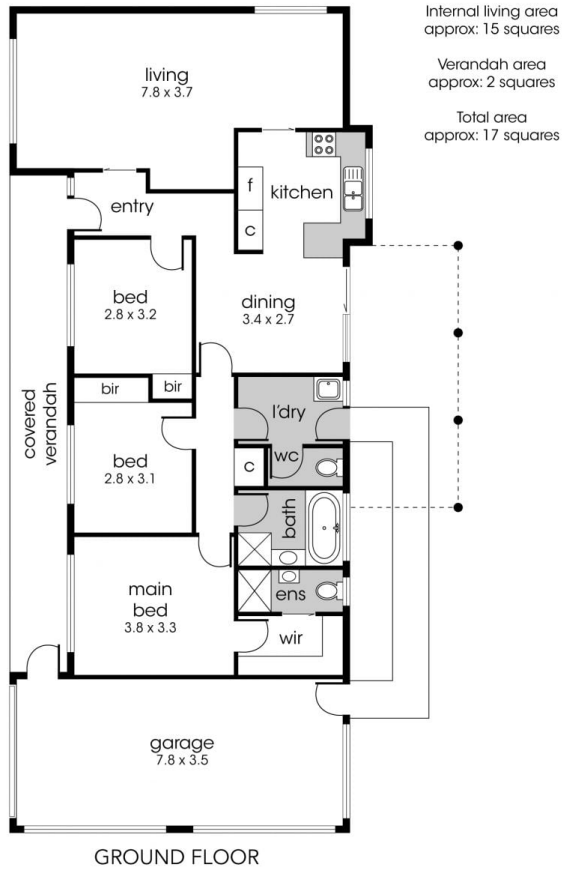
Type : House
Land Size : 661 sqm
View : <https://couperslp.com.au/8277526>



Paul Wells
0428 745 449

[For full version visit the website](https://couperslp.com.au)

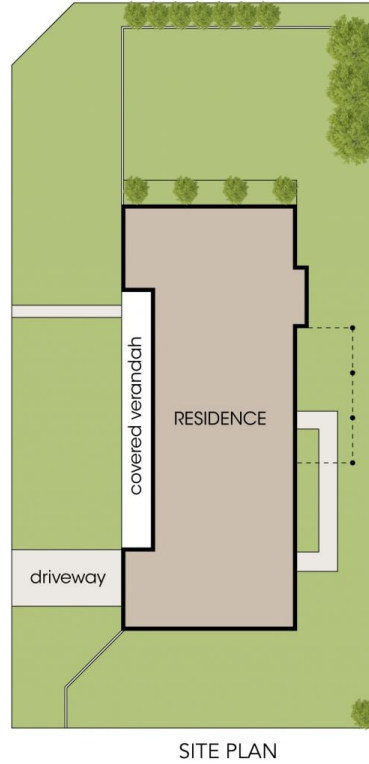
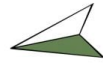
<https://couperslp.com.au>



Internal living area
approx: 15 squares

Verandah area
approx: 2 squares

Total area
approx: 17 squares



26 Graf Road, Somerville

COUPERS
LIFESTYLE PROPERTIES